



THE GRAPEVINE

THE PROBUS CLUB OF BAYSIDE INC.

Reg No A 0030302 G

ABN 16 996 931 584

Email: secretary@baysideprobus.org.au

Web: <http://baysideprobus.org.au>

Correspondence to: PO Box 133

Black Rock VIC 3193

No:331 September 2024



PRESIDENT'S MESSAGE

Today marks a special day in the life of our Club as we celebrate 30 successful years of Probus in Bayside. I am pleased to be back from my holiday to share in the celebrations. My thanks to John Wilson our Vice President for doing the honours whilst I have been away.

We can be proud of our members both past and present who have worked tirelessly throughout the years in the pursuit of Probus ideals of Fun, Friendship and Fellowship through active membership and the development of a wide range of interesting activities in a friendly and inclusive environment.

Our Club is in sound heart as a result of excellent leadership in the formative years and this continues today with ever increasing membership and active participation. Today we honour two of our foundation members with Honorary Membership in recognition of the dedicated service along with three members who have achieved 20 years of service - Congratulations to them.

We extend the warmest welcome to special guests, the Mayor of the Bayside City Council, Councillor Fiona Stitfold, the Victorian State Parliament Member for Brighton, Mr James Newbury, Chairman of Probus South Pacific, Mr Michael Ransom and Probus Ambassador Belinda Evans who join us in our celebration. We also welcome the many visitors plus seven new members being inducted into our Club today.

As we celebrate this 30 Year milestone we look forward to the future of our Club.

Congratulations to all and Best Wishes..... Jaan Enden

ALMONER'S MESSAGE Margaret Purcell

The commitment of past and present members of our Club has ensured this special celebration today. To members who are unwell we hope the sunshine will bring some cheer.

Best Wishes Margaret

BIRTHDAY WISHES to the following members celebrating a birthday in September:

John Evans, Margaret Outhred, Jenny Plummer, Elena Vasilieva.



President

Jaan Enden 9598 9641

Vice-President

John Wilson 0488 271 262

Secretary

Tony Harding .0434 604 784

Treasurer

Phil Wicks 0411 127 297

Membership Secretary

Estelle McNamara

0419 229 340

Almoner

Margaret Purcell 9598 9695

Activity Coordinator

Judy Heyward 0407 830 393

Committee

Marg Connolly 0428 694 549

Judy Heyward 0407 830 393

John Wilson 9598 5465

Activity Leaders/Assistants

Day Trips

Jenni Connolly 0438 167 550

Dine-Out

Estelle McNamara

0419 229 340

Gardens & Galleries

Judy Heyward 0407 830 393

Live Theatre

John Wilson 9598 5465

Mah Jongg

Meredith East 8588 1858

Sew 'n Sew

June Guppy 9584 5784

Walks

Colin Foxwell 0411 185 951

Welcoming Officer

Christine Fellows

Recruitment Officer

Barry Smith 9521 0951

Speaker Officer

Tom Morris 9589 3172

Assistant Treasurer

Patti Reed

Library – books, jig-saws

Peter Longmore 0418 887 630

Grapevine Editor

GraemeMcLean 0438 806 090



THE GRAPEVINE

Please remember to wear your **NAME BADGE** to meetings and activities.

Please remember to register at the meeting, your interest in attending any of the activities. If there is a change to something with the activity, then you will be contacted with these important details. If you don't register, then the Activity Leader has no way of knowing that you plan to come!

ACTIVITIES:

***SPECIAL REQUEST TO MEMBERS: Activity Leader for Movies**

Over the last three months we have trialled this activity and reintroduced monthly movies at cinemas for members with numbers growing and overall success. We now seek a member or perhaps two members willing to coordinate this activity going forward as Activity Leader/s. Please see Estelle McNamara or any Committee Member to take up this opportunity to assist your Club.



LET'S DO LUNCH TODAY!

Please add your name to the list at the Dine-out Table so that we can advise the Yacht Club kitchen how many members and visitors will be coming to enjoy lunch downstairs after the meeting.

CHAT & CHEW.....

Thursday 5th September at 10.00am AND Friday 20th September at 10.00am, at Feast Deli and Cafe, 341 Hampton Street, Hampton.

LIVE THEATRE ---- with John Wilson

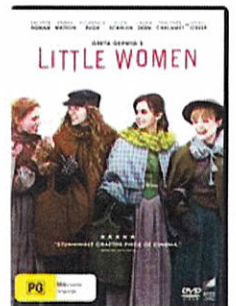
Thursday 5th September at 8.00pm at the Malvern Theatre Company, 29 Burke Road, Malvern East.

The show is 'Little Women' the musical.

Louisa May Alcott's beloved story of the four March sisters is brought to vivid musical life in Little Women.

Ticket Price \$27.00 per person.

Please book and pay at the Live Theatre Activity Table.



WALKS with Colin Foxwell

Wednesday 11th September at 10.00am. - Walk along the foreshore path from the end of North Road towards Elwood.

Enjoy the foreshore towards Elwood starting opposite the North Point Café at the end of North Road. There is plenty of parking.

Morning tea/coffee afterwards in the North Point Café.

New walkers welcome! We adjust our walk to the slowest present and the walk will be there and back so anyone can stop and wait for the others to return.

Put your name down at the activity table today or call **Colin Foxwell** on 0411 185 951.





THE GRAPEVINE

MAH JONGG with Meredith East

Thursday 12th September at 1.30 to 3.30pm in the Games Room at Richfield Village, 317 Wells Road Aspendale Gardens (near corner Springvale Rd).

Lunch at Noon in the Restaurant is also an option.

Carpooling can be arranged between yourselves or the 708 bus from Hampton Station stops right outside the gate at Richfield. We look forward to enjoying another afternoon playing Mah Jongg. New members welcome and tuition can be given.

Place your name with Meredith at the activity table for lunch (if applicable) and for playing.



DINE-OUT with Estelle McNamara

Monday 16th September at 12.30pm at Ricketts Point Café 497c Beach Road, Beaumaris – a delightful beachside location.

Pay as you go with all dietary requirements catered for.

The menu offers many choices of pastas, flatbread and the favourite of many – fresh fish.

Please place your name on the list at the activity table today to indicate your intention to join us.



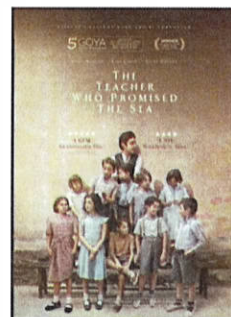
MOVIE AT PALACE BRIGHTON BAY THEATRE with Estelle McNamara

Tuesday 17th September

- I. Please Indicate at the Activity Table if you are interested in going to a movie
- II. The week before we will advise those who had indicated their interest with details of the movie, venue and time.

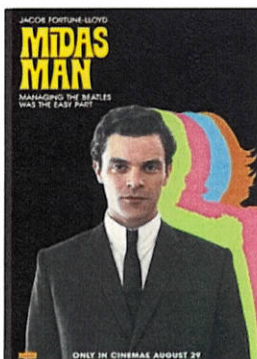
The possible choices are:

- I. **The Teacher Who Promised The Sea** – drama – 112 minutes
Inspired by extraordinary true events this superb new drama follows a charismatic teacher whose progressive outlook transforms the lives of a group of young students on the eve of the Spanish Civil War.
The movie is an eloquent and deeply moving tale of the power of education and the importance of never letting the lessons of history be forgotten.



OR

- II. **Midas Man** drama, biopic - 112 minutes



When Brian Epstein sets foot in the Cavern Club in 1961 to watch the Beatles perform he saw something no one else could – a glimmer of gold! Midas Man is the emotional, heartfelt and often funny story of how Epstein polished four scuffy lads who were going nowhere and turned them into a global phenomenon.



THE GRAPEVINE

SEW 'N SEW with June Guppy

Tuesday 24th September – at the home of June Guppy, 2 Pyingerra Crescent Cheltenham at 1.30pm.

Do you have a project which needs finishing? Come along and join us for a 'catch up' day. We will also continue our work on Christmas trinkets.

All are welcome at 2 Pyingerra Crescent, Cheltenham from 1.30pm.

Please indicate if you intend to come – see June at the Sew 'N Sew activity table and add your name to the list



GARDENS & GALLERIES with Judy Heyward

Thursday 26th September at 10.00am visit to Cruden Farm, 60 Cranbourne-Frankston Road, Langwarren

Left by the late Dame Elisabeth Murdoch, Cruden Farm is one of Victoria's most exciting gardens – A Lifetime Garden.

We will be driving and car pooling is an option. Travel time is estimated at approximately 35 minutes.

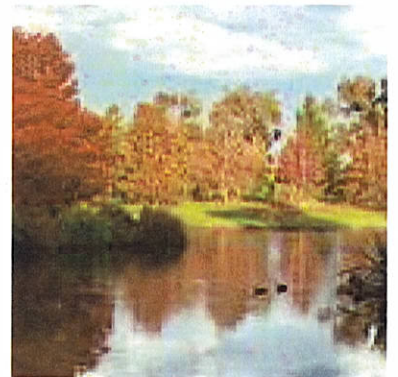
We will meet at Dendy Park free Car Park, Brighton near the main oval.

Wander the expansive property with its many gardens and beautiful vistas with spring blossoms.

COST: \$10.00 per person. With ten or more members and visitors, a 50 minute guided tour will be arranged at a cost of **\$35.00 (including the \$10.00 entry fee)**

Following the visit we will have lunch at The Grand Nepean Hotel, 499 Nepean Highway, Frankston

Please place your name on the list at the activities table with Pat today.



DINE-OUT with Estelle McNamara

Friday 4th October at 12.40pm at The Bridge Hotel, 1 Nepean Highway, Mordialloc.

The Bridge Hotel offers a very extensive seniors menu along with a comprehensive main menu covering a range of dietary requirements. This is our last lunch to farewell winter as we will be welcoming daylight saving the following weekend.

Please place your name on the list at the activity table today.





THE GRAPEVINE

GARDENS & GALLERIES..... with Judy Heyward

Tuesday 15th October at 11.00am we will visit the Justin Art House Museum in Prahran. Cost: \$30.00 per person – including refreshments.

The Justin Art Museum is an initiative of Charles and Leah Justin who are passionate collectors of contemporary art over more than 30 years. Their spectacular collection comprises over 300 works and growing.



VALE – Irene Down

Many of our older members will be saddened to learn of the recent passing of past member Irene Down. Irene was a member from 1998 until 2016. With her husband Bert, who was secretary of the Club from 2001 to 2004, both Irene and Bert played an important part in leading and participating in the early and on-going success of the Club.

Our condolences have been conveyed to the family.

LAPTOPS FOR SCHOOLS:

Following the Club's success in the recent Federal Grants Program that facilitated the purchase of a new Laptop, the old laptop plus two additional laptops from members have been repurposed and donated to the Schools Program 'This is It'. More than 2,000 repurposed laptops have been made available to students in need and still more are required. Please see Graeme McLean if you have an old laptop in a cupboard and can assist with this worthwhile program.



LEAVING THE MEETING EARLY: If for any reason you have to leave the meeting early, it is important for insurance purposes to record the time of your departure in the Apology Book.

CLUB OUTINGS AND REFUND POLICY

No refunds of payments will be made to members for any outings organised by the Club unless

- (a) The activity has been cancelled and the Club has not incurred any financial liability in respect of the outing;
- (b) The Club has paid in full the cost of the outing and has not incurred any financial liability as a result of the member's non participation;
- (c) Where the cost of the outing or extended trip is substantial, members are to be encouraged to take out appropriate cancellation travel insurance.

EFT PAYMENTS – When paying the Club by EFT please note the following details:

Club Bank Account Name: Probus Club of Bayside Inc.

BSB Number: 633 000 Account No.: 153 286 968

Enter you name and information on the payment i.e. Subscription, Live Theatre, Day Trip, G&G, Dine-Out etc.



North & Common Restaurant Pentridge



Walking Group



Royal Brighton Yacht Club Venue View



Our Club Library - Books & Jigsaws